

02.04

20/04/2023  
C220glen

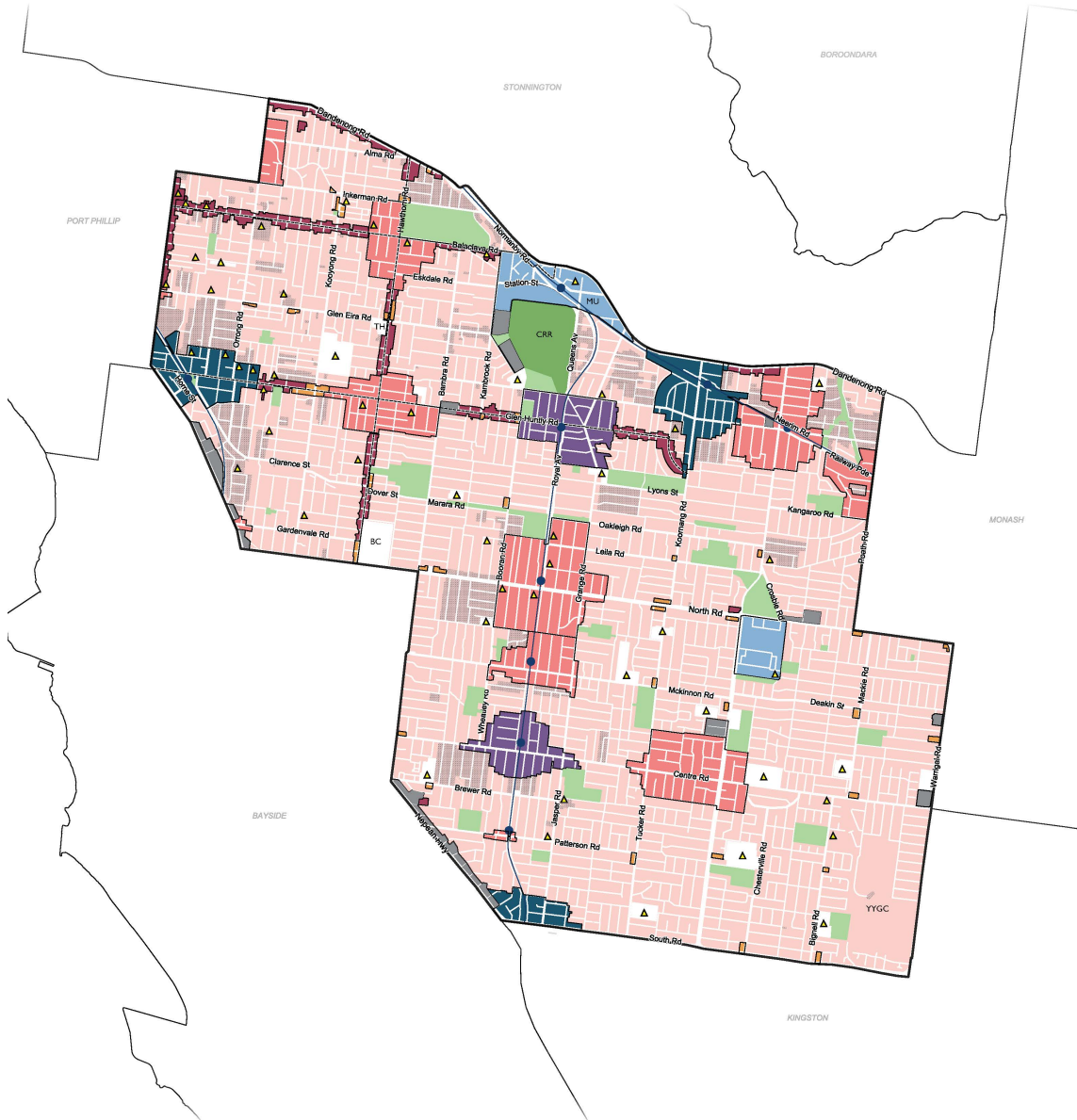
STRATEGIC FRAMEWORK PLANS

The plans contained in Clause 02.04 are to be read in conjunction with the strategic directions in Clause 02.03.

02.04-1

--/--/---  
Proposed C237glen

Strategic framework plan



LEGEND

<b>Activity Centre Network</b>		<b>Neighbourhood Residential Areas</b>		<b>Labels</b>	
	Education and Innovation Precinct		Minimal Change Area	BC	Brighton Cemetery
	Major Activity Centre with Urban Renewal		Incremental Change Area	CRR	Caulfield Racecourse Reserve
	Major Activity Centre	<b>Map context</b>		MU	Monash University
	Neighbourhood Activity Centre		Open Space	TH	Glen Eira Town Hall
	Local Centre		Restricted Open Space	YYGC	Yarra Yarra Golf Course
<b>Out of Centre</b>			Education and Health		
	Employment Areas		Other		
	Transport Corridor/Substantial Change area outside an Activity Centre		Train Lines and Stations		
			Tram Lines		

02.04-2  
20/04/2023  
C220glen

Activity centre hierarchy plan



LEGEND

- |   |   |   |                               |   |              |
|---|---|---|-------------------------------|---|--------------|
|  | Education and innovation precinct with urban renewal      |  | Neighbourhood activity centre |  | Local centre |
| ①   | Caulfield Station Precinct (also a major activity centre) | ⑧   | Alma Village                  |   |              |
| ②   | East Village  | ⑨   | Bentleigh East                |   |              |
|  | Major activity centre with urban renewal                  | ⑩   | Caulfield Park                |   |              |
| ③   | Carnegie  | ⑪   | Caulfield South               |   |              |
| ④   | Elsternwick   | ⑫   | Gardenvale                    |   |              |
| ⑤   | Moorabbin Junction  | ⑬   | Hughesdale                    |   |              |
|  | Major activity centre                                     | ⑭   | McKinnon                      |   |              |
| ⑥   | Bentleigh   | ⑮   | Murrumbeena                   |   |              |
| ⑦   | Glen Huntly   | ⑯   | Ormond                        |   |              |
|   |   | ⑰   | Patterson                     |   |              |
|   |   | ⑱   | Ripponlea                     |   |              |
- 
- Other**
-  Road Network
  -  Train Line/Station
  -  Tram Line

